

Technical Specification

BASIC CONFIGURATION

NAME	SUBASSEMBLY DESCRIPTION
Motherboard	PRO Q370M-C
Processor	Intel(R) Core(TM) i7-10700
Memory	DIMM 8GB DDR4
Memory	DIMM 8GB DDR4
Case	CJ708 240W 80+

ADDITIONAL ELEMENTS

NAME	SUBASSEMBLY DESCRIPTION
Hard Disk	M.2 256GB PCIe SSD
Drive	Internal DVD-RW slim drive
Add-on card	LPC Debug Card

Illustrative photo of the computer



The manufacturer allows the user to independently replace certain components of the computer:

- . RAM Operating Memory
- . M.2 SSD Mass Storage
- . ODD Optical Drive



If the user decides to replace the computer components by themselves, they may carry out this operation under the remote supervision of the manufacturer's Central Service. For this purpose, the user must contact the Central Service of NTT System S.A. After consulting with the user, the Central Service will send the specified component and instructions for replacing the component concerned.

Tools needed for performing repairs: PH1 and PZ1 screwdrivers which are widely available in good hardware stores.

In order to remove the cover of the case, you need to use a cross screwdriver and unscrew the 2 screws marked in the photo above.

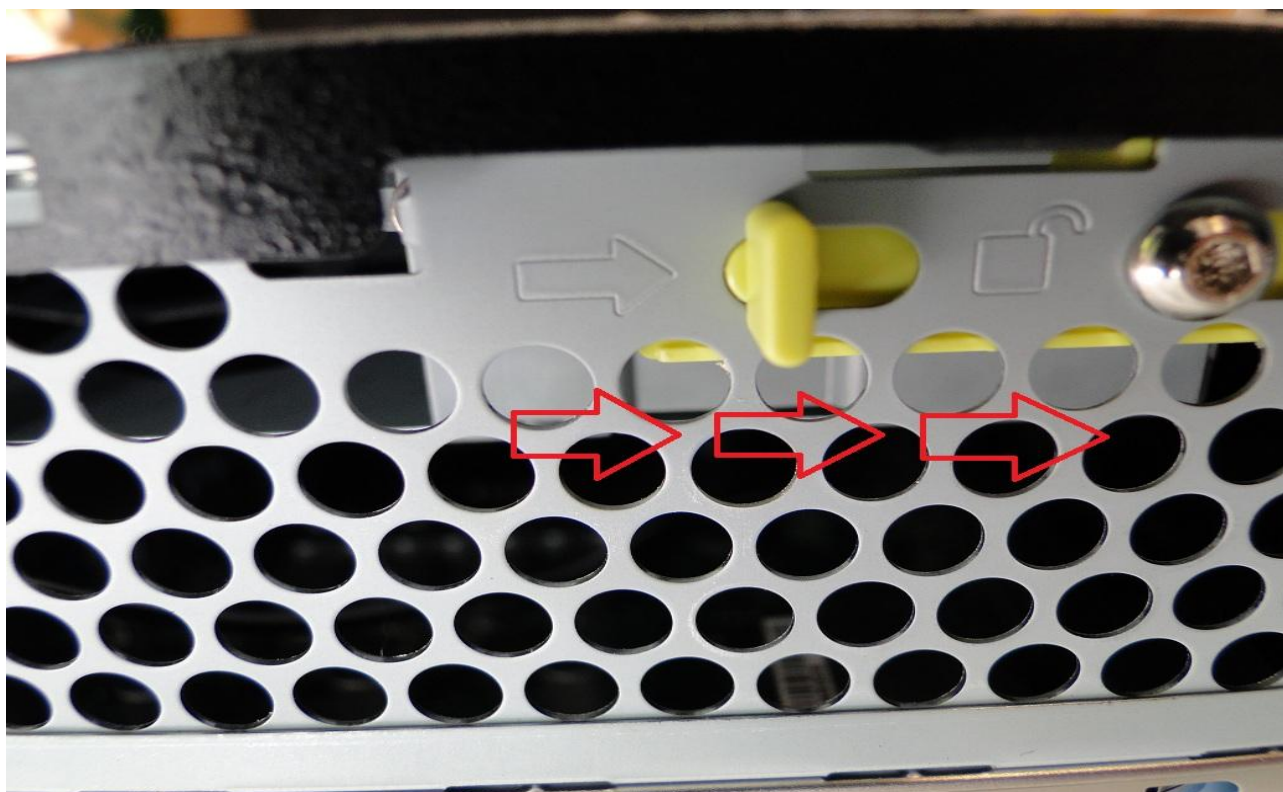
Additionally, the cover is secured by a lock which must be released by moving the bolt to the right side. The unsecured cover can be pulled out in a backward direction.

Note 1

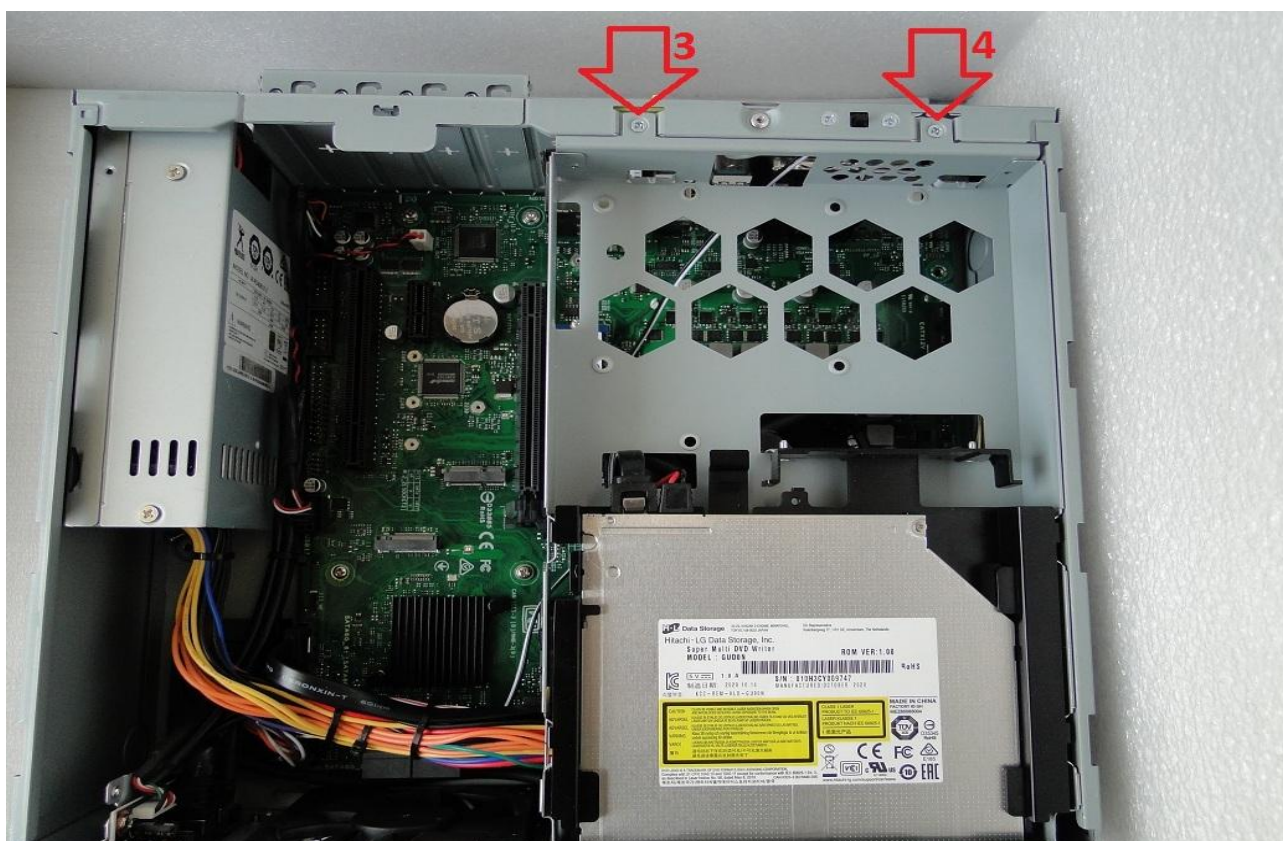
It is not recommended to start the computer with the case covers removed. When starting a computer with the case covers removed, hands and fingers may be exposed to moving parts such as cooling fan blades.

Note 2

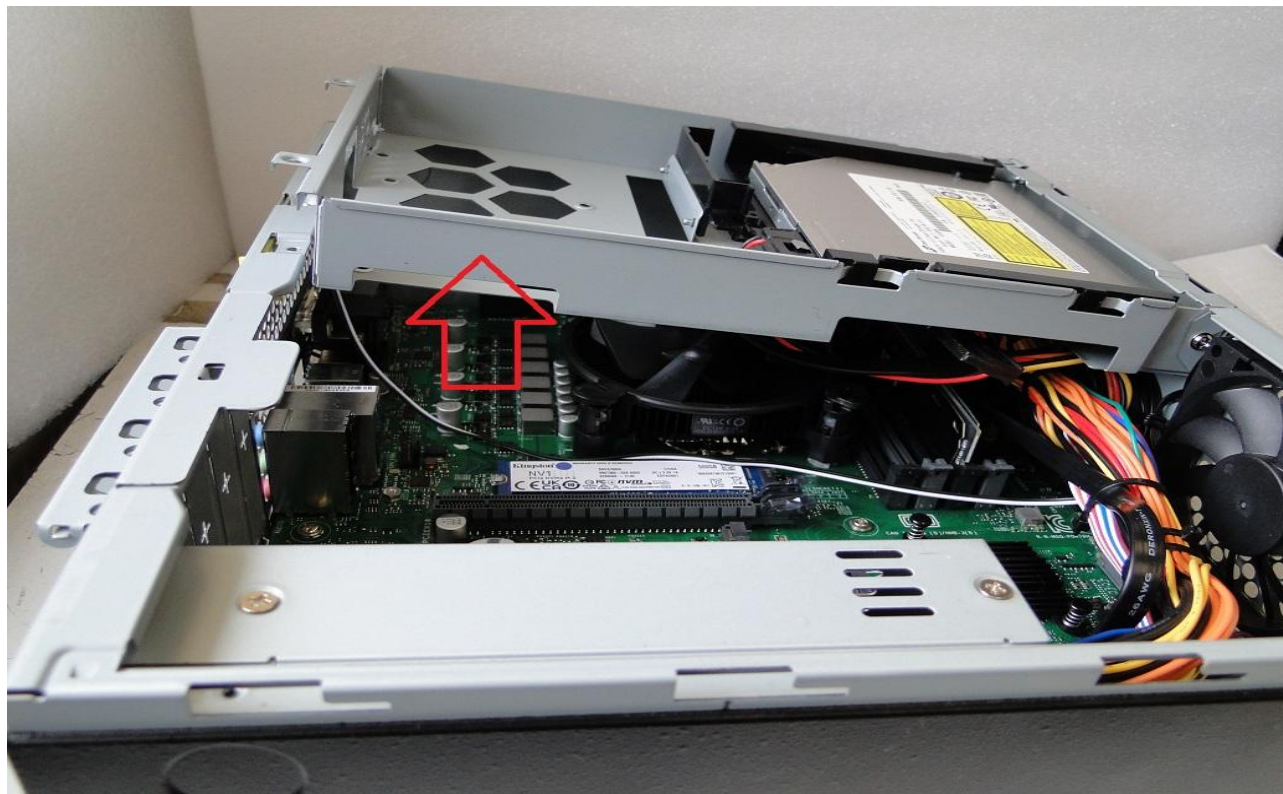
Computer components are highly sensitive to electrostatic discharge (ESD). Any work related to dismantling or assembling computer components should be carried out in compliance with ESD protection rules.



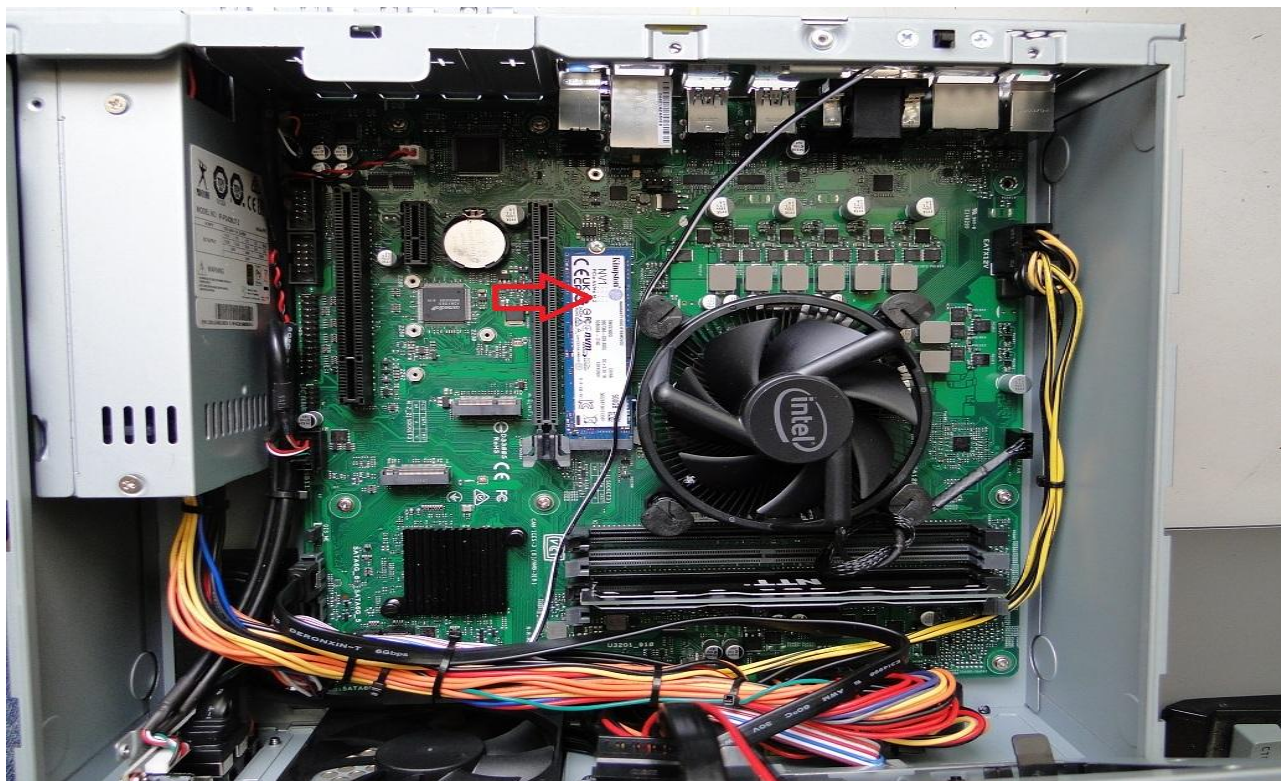
The next stage is to disassemble the DVD drive bracket. In order to do this you need to unscrew the screws marked in the photo with numbers 3 and 4.



Lift the back of the unscrewed bracket upwards in a 90-degree direction.



M.2 Drive Replacement Instructions



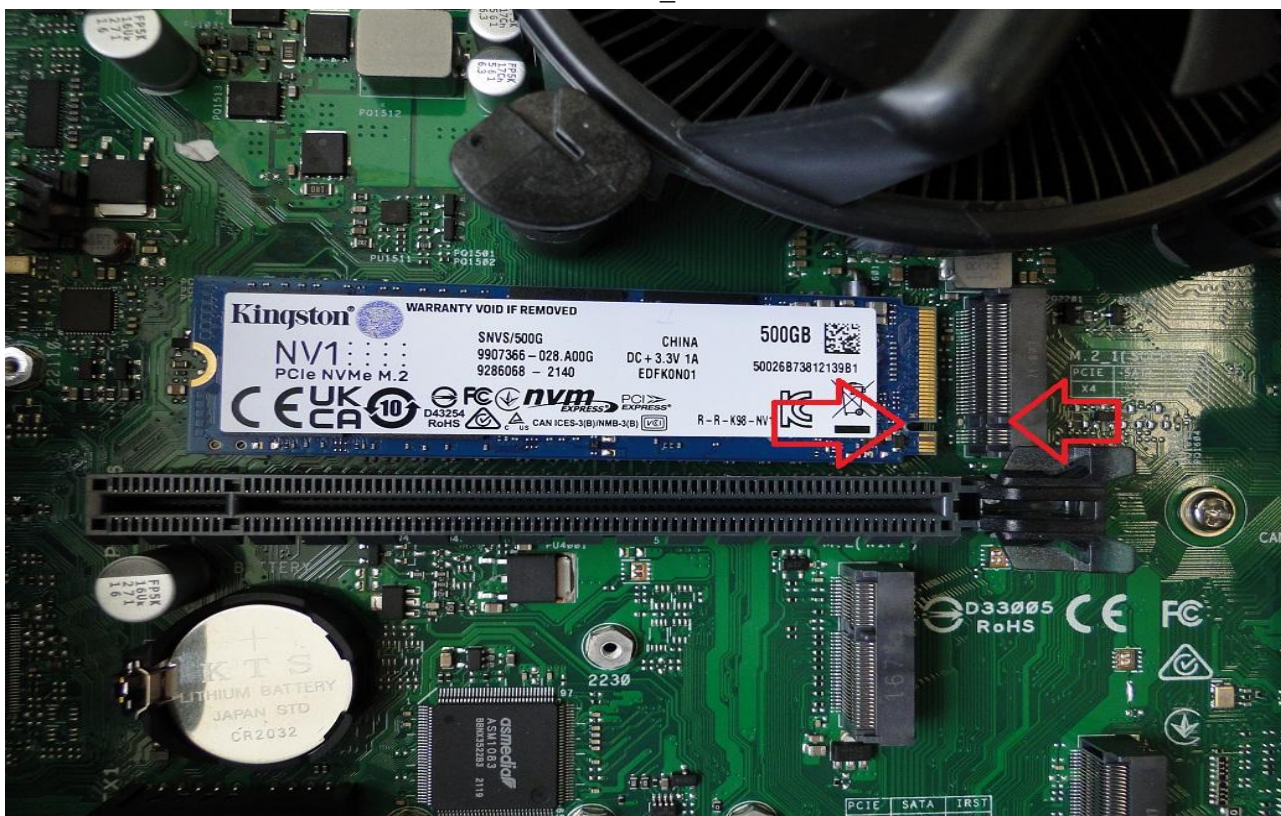
With the help of a cross screwdriver, unscrew the screw securing the M.2 disk.



Lift the back of the disk up and slide it out of the slot.



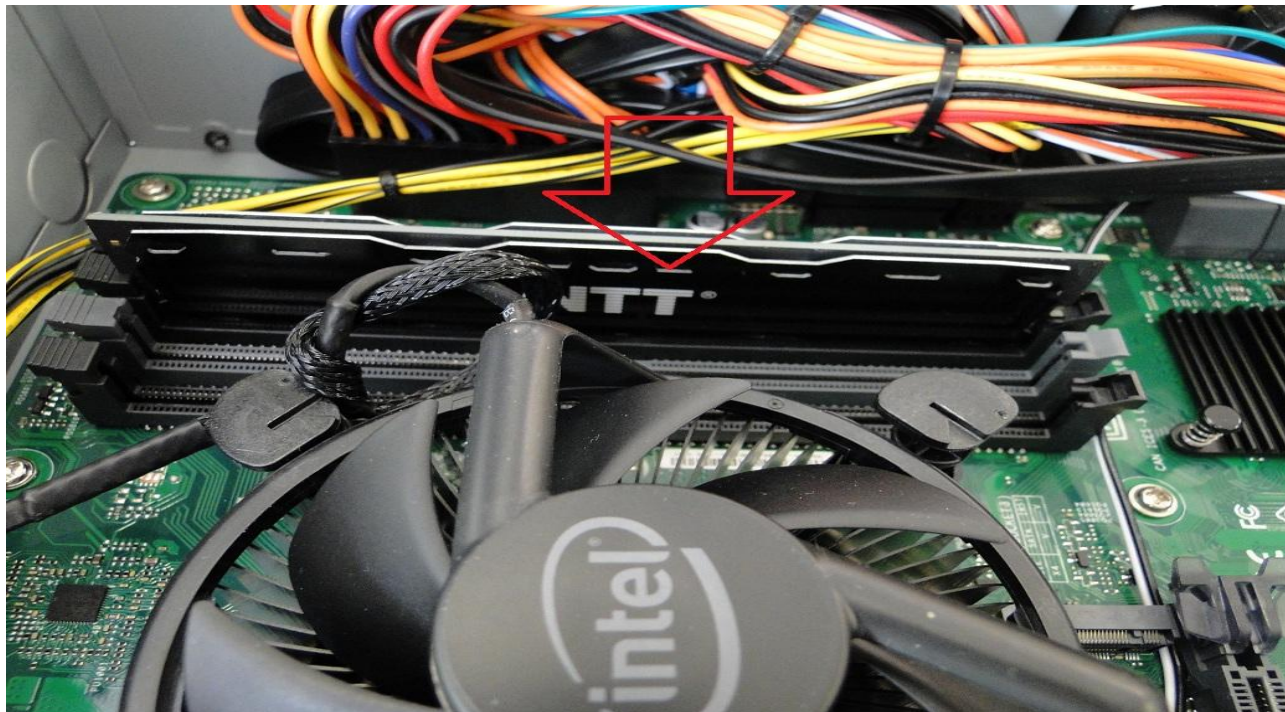
Installation is to be carried out in reverse order, paying attention to the alignment of the drive cutout with the M_2 slot.



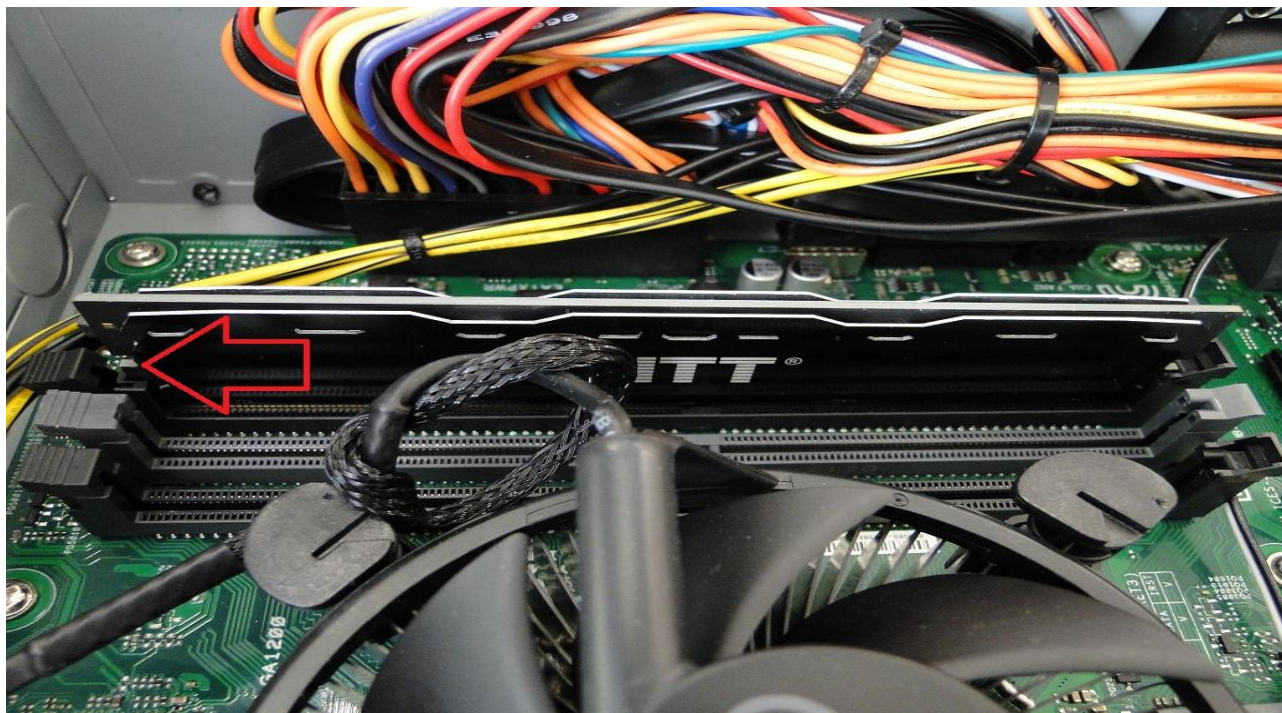
Finally, screw in the safety screw.



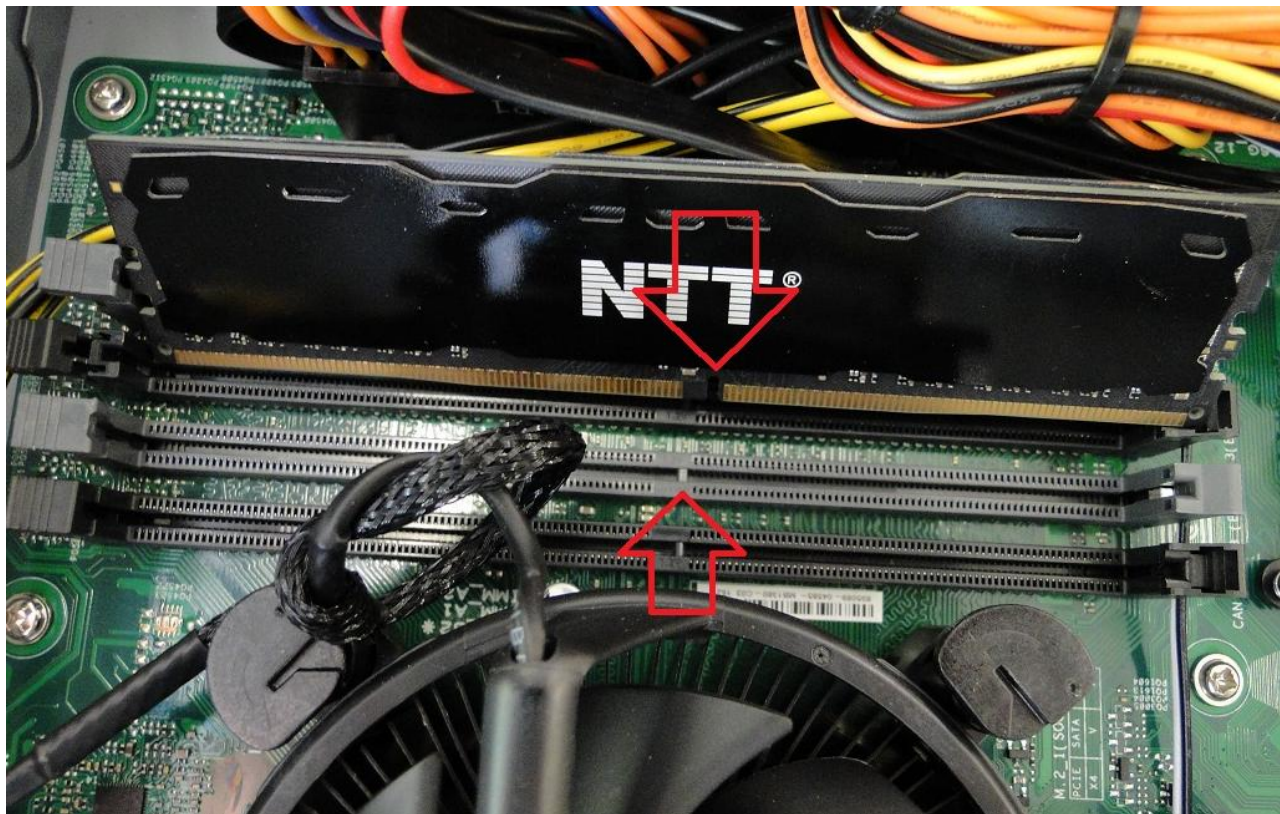
RAM Replacement Instructions



Carefully release the safety latch located at the end of the memory module slot with your fingers until the module springs off, then gently slide the memory module upward out of the slot.



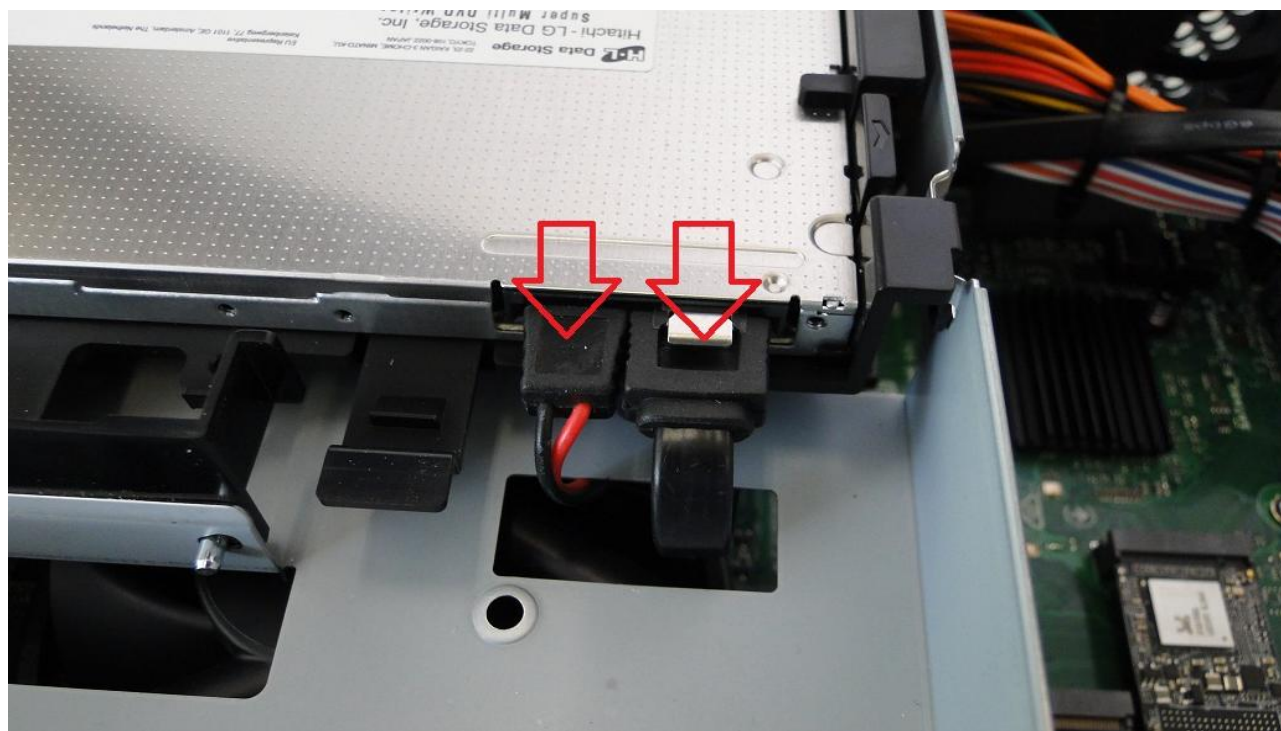
Installation is to be carried out in reverse order, paying attention to the alignment of the memory module cutout with the DDR4 slot.



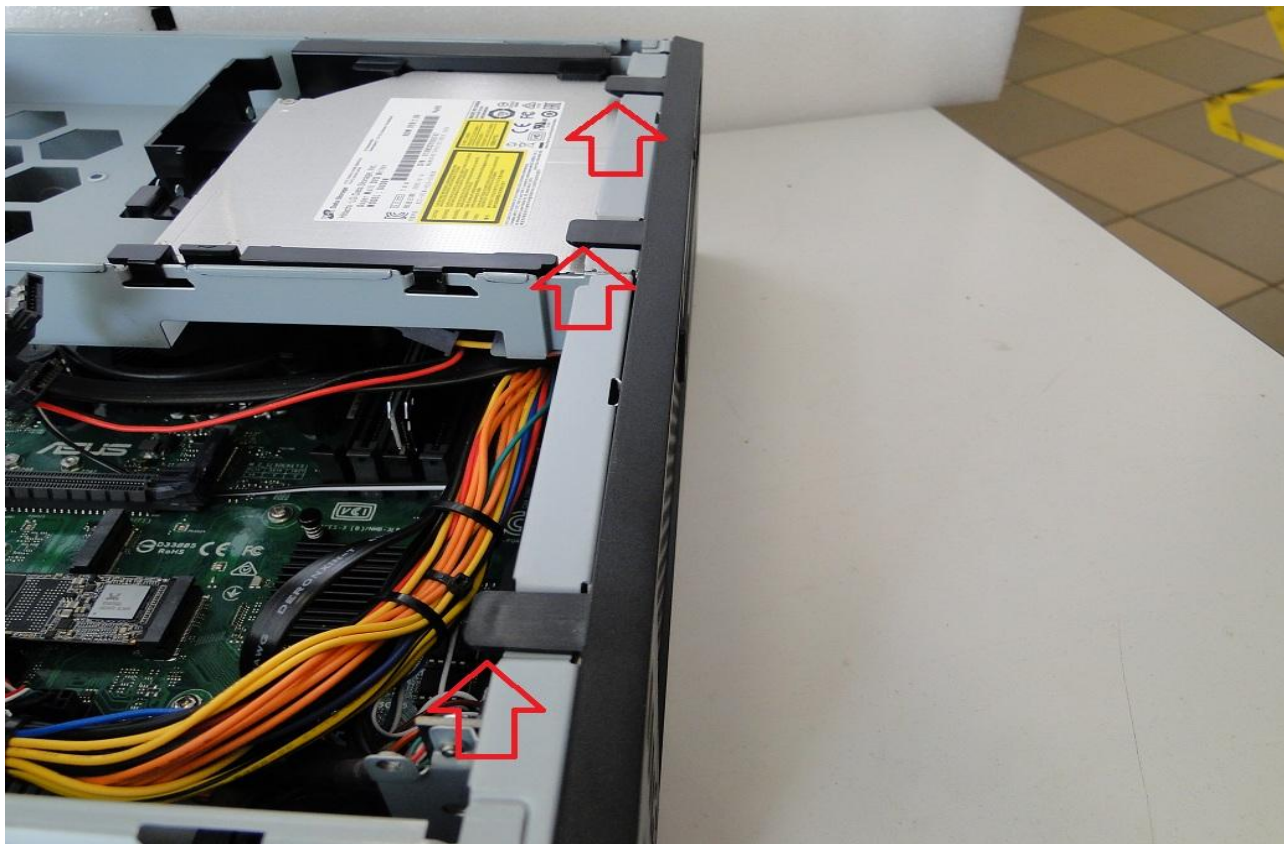
DVD-RW Drive Replacement Instructions



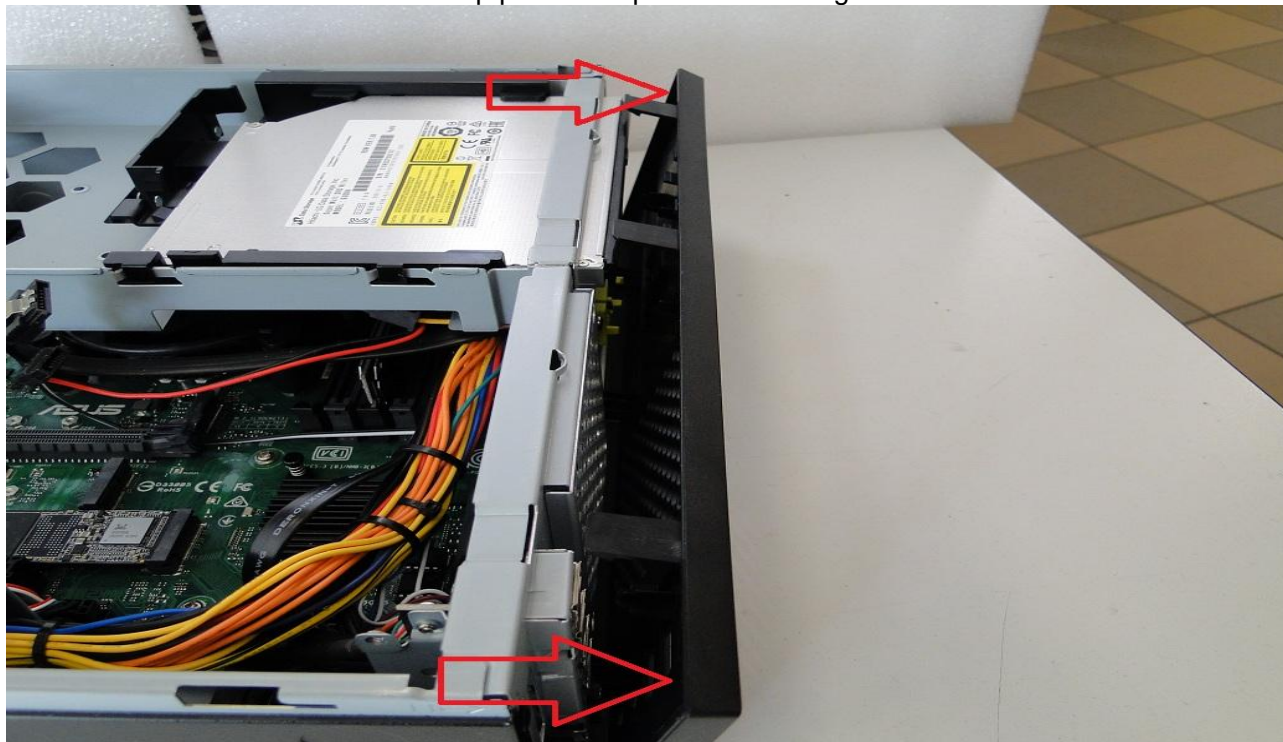
Carefully slide out the power and SATA plugs with your fingers. The SATA cable may have a safety feature in the form of a metal ratchet which must be pressed.



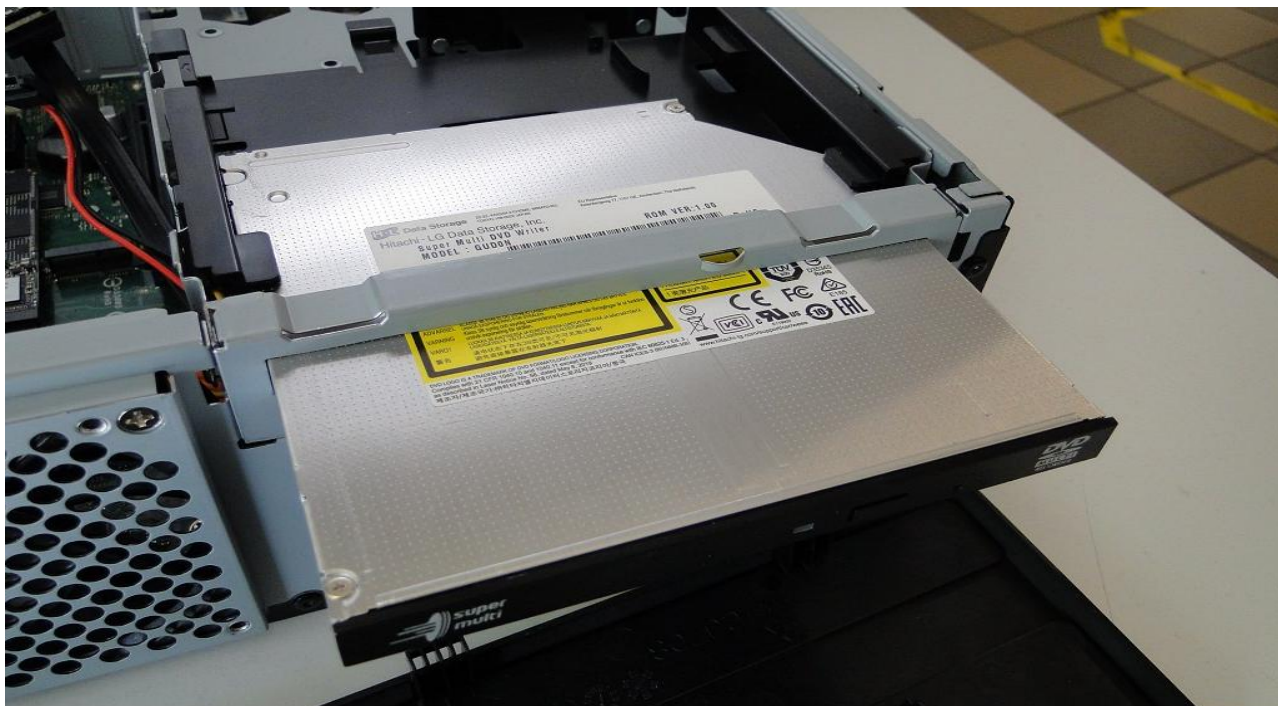
Carefully unsecure the front panel latches with your fingers.



Slide out the top part of the panel in a 90-degree direction.



Slide the DVD drive out of the case.



Installation is to be carried out in reverse order, paying attention to the shape of power and SATA plugs.

